

REDEVELOPMENT OF KOWLOON BOWLING GREEN CLUB COMETITION

By studying the historic background of the Kowloon Bowling Green Club, we found that there has always been a kindly atmosphere in the club. The club members have been a happy family who have their times of celebration and also went through some sad moments when the Japanese occupied the club. Members are so close together that social interaction is very important.

In the new sports complex design, a sky garden and a back garden, which form leisure areas, are provided on the 1st floor to encourage social interaction. The sky garden not only increases the floor area, but also creates a colonnade along the bowling fields which provides a comfortable area for audience and players by keeping the sunlight and rain away. In the stage 2, connection between the new swimming pool building and sports complex through sky garden is proposed which unifies the facilities of the club in the future.

In order to have better ventilation and lighting, a double-height atrium is introduced to the building. Its full-height glass walls maximize the diffuse sunlight from north and also maintains visual connection to the greenery outside.

The double-skin, made out of vertical timber louvers, which wrap around the building, creates a natural feeling. Constructed as a continuous surface, it protects against the solar radiation and due to its separation to the building, it creates vertical ventilation that allows air to bring heat away from the building surface.

Finally, new facilities like 2 squash courts, aerobic and yoga rooms and steam rooms are incorporated in the complex and hopefully to attract more new members in the future.



Site Plan 1:500

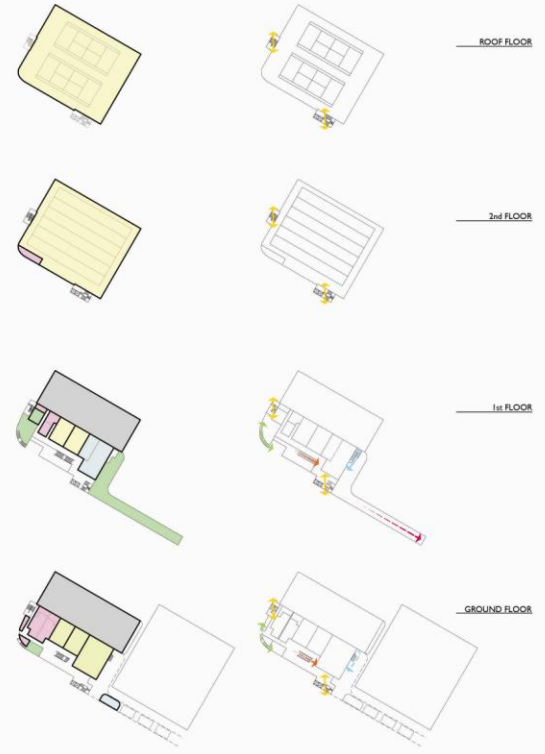


Exterior View (West Side)

DIAGRAMS

Program arrangement

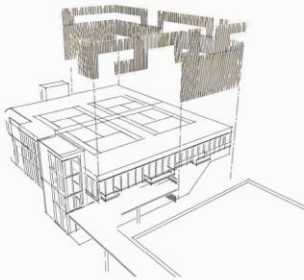
Circulation



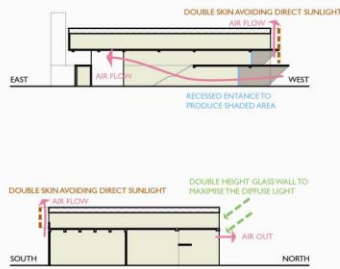
- SPORTS FACILITIES
- RESTAURANTS
- LEISURE AREA
- OTHER FACILITIES
- EXISTING SUBSTATION
- MAIN VERTICAL CIRCULATION
- TO RESTAURANT AND SKY GARDEN
- CONNECTING TWO GARDENS
- FOR FUTURE SWIMMING POOL
- FOR CHANGING ROOM & DIVIDING THE ATRIUM AND SQUASH COURT

DIAGRAMS

Double Skin Design



Natural Lighting & Air Flow



RENDERINGS

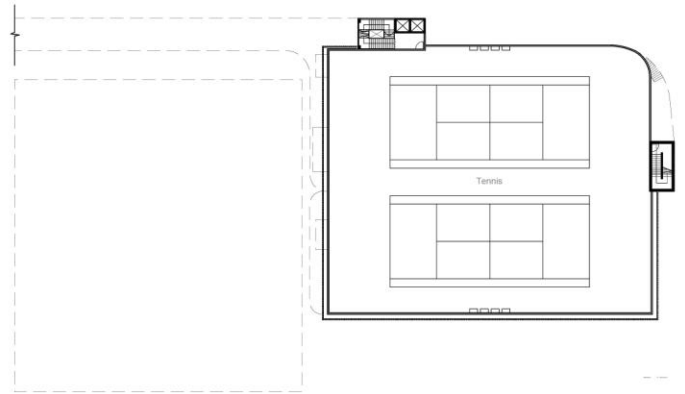
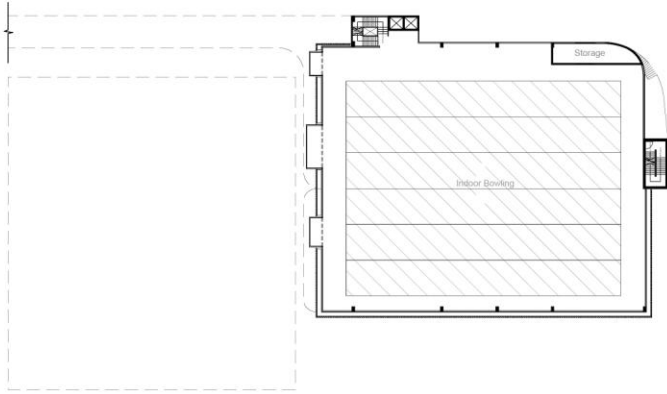
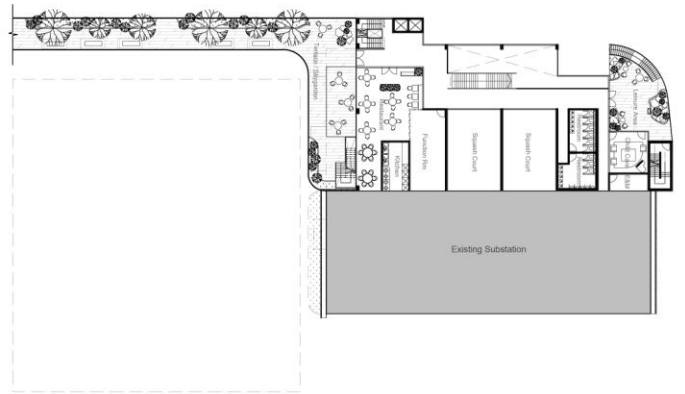
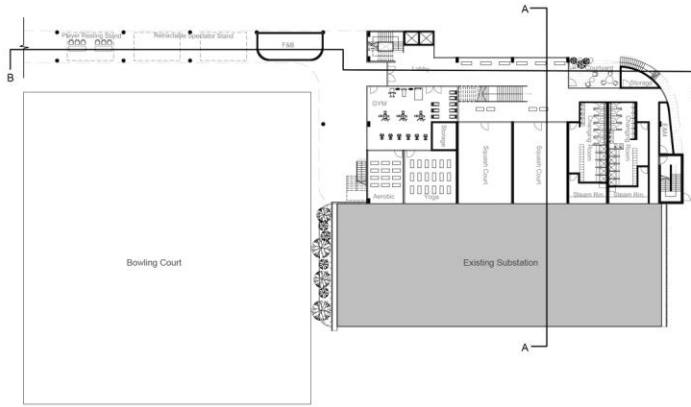


Exterior View (North Side)

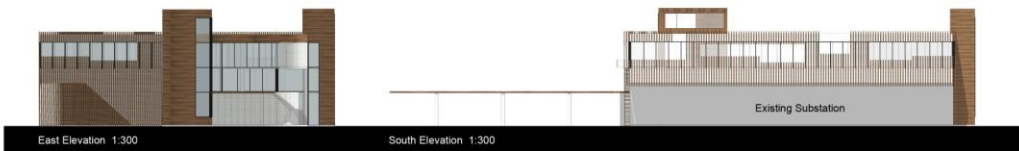
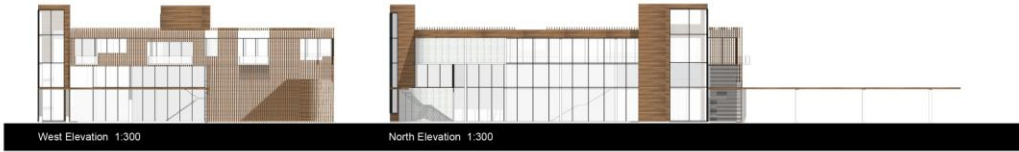


Interior View (Atrium)

PLANS 1:300



ELEVATIONS 1:300



SECTIONS 1:150

